

The Rain Garden Theater

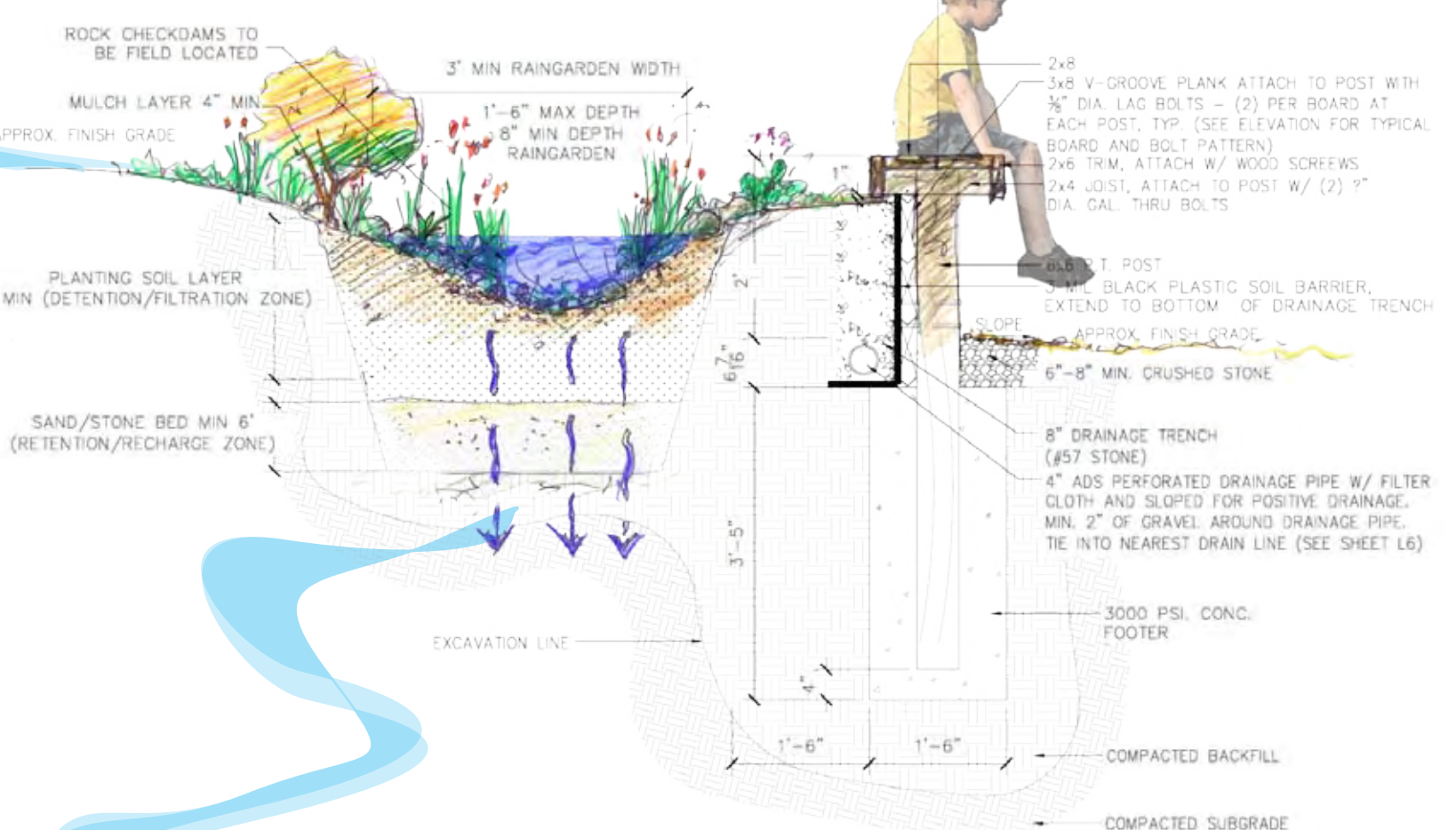
At Camp Longridge
Ridgeway, South Carolina

A rain garden is a depressed garden which takes advantage of rainfall and stormwater runoff in its design and native plant selection. On the surface, a rain garden looks like an attractive garden, but it is designed to withstand the extremes of moisture and concentrations of nutrients, particularly Nitrogen and Phosphorus, that are found in stormwater runoff. Rain gardens are sited ideally close to the source of the runoff and serve to slow the stormwater as it travels downhill, giving the stormwater more time to infiltrate and less opportunity to gain momentum and erosive power.
*Source: Low Impact Development Center: http://www.lowimpactdevelopment.org/raingarden_design

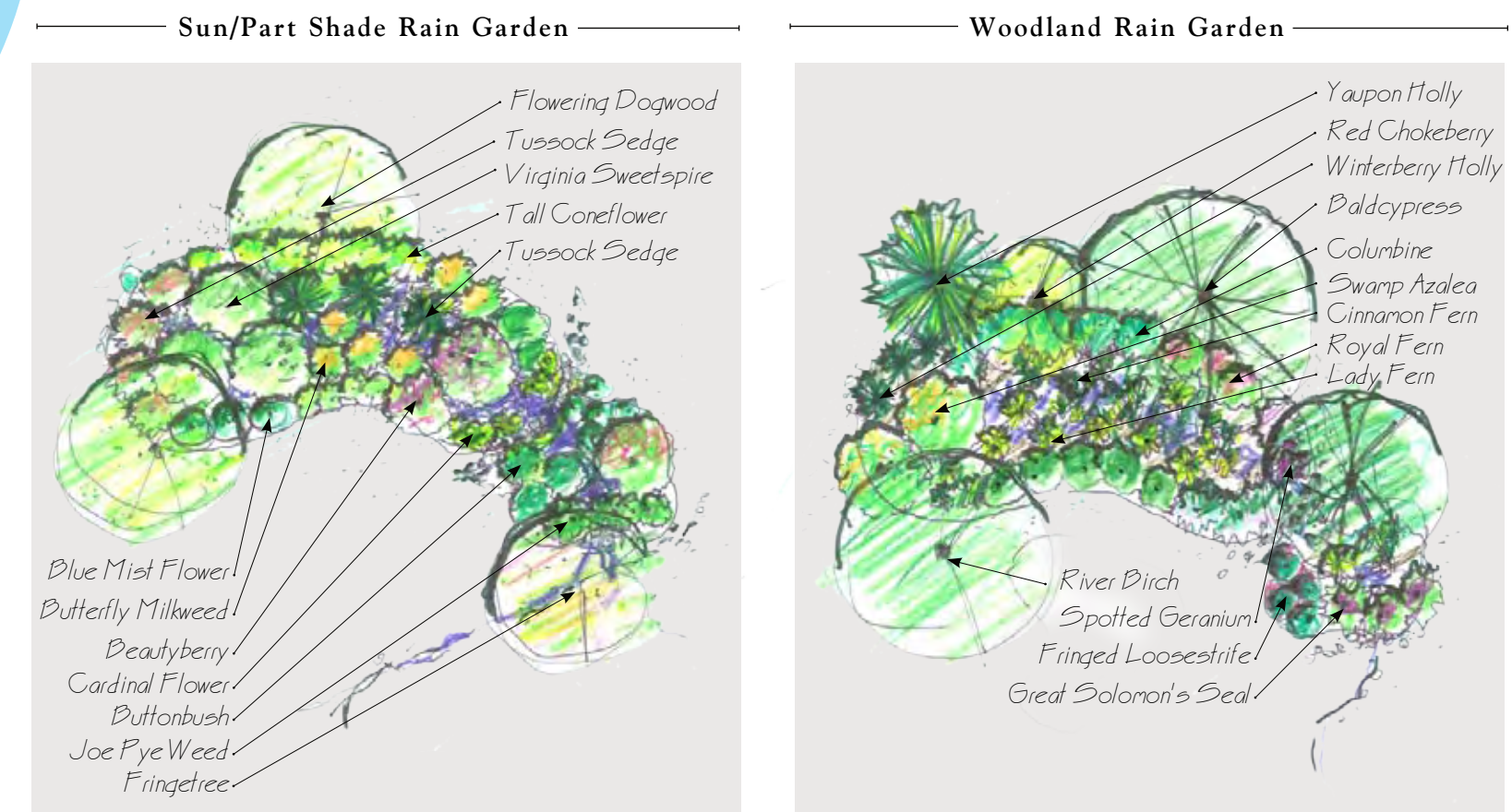
View of Rain Garden Theater



Rain Garden Hillside Seat Wall



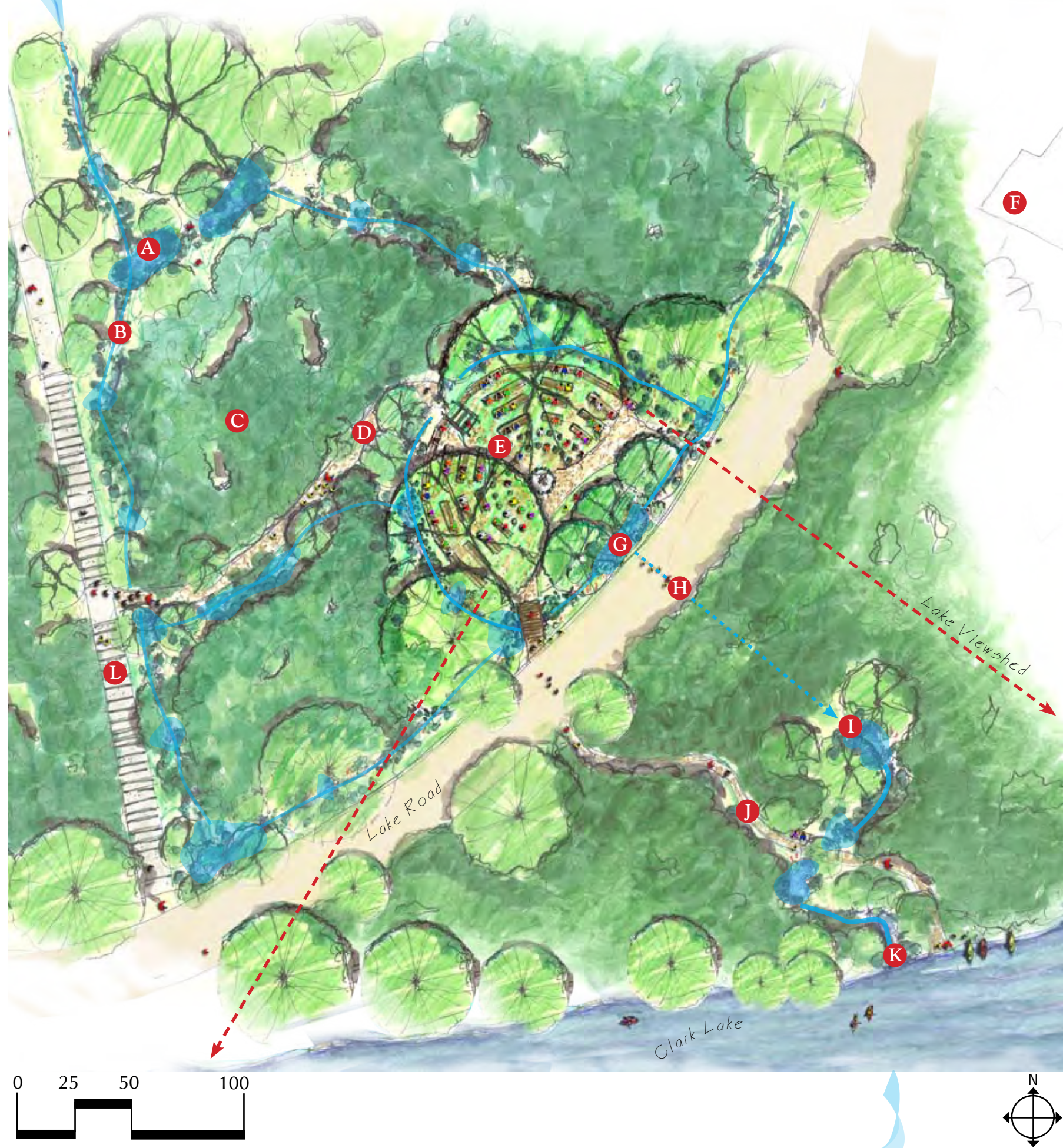
Typical Rain Garden Planting Plans



Context



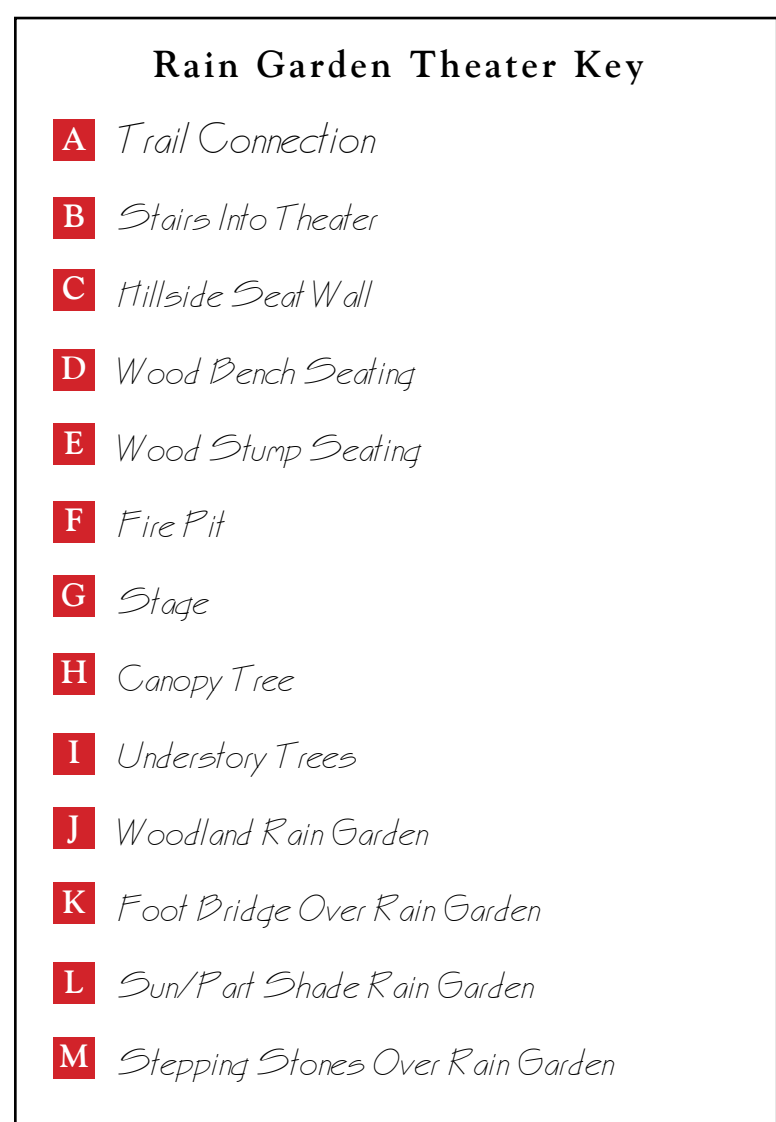
Conceptual Stormwater Solution



Native Plant List

Perennials & Grasses	Shrubs	Trees
Columbine (Aquilegia canadensis) ●	Red Chokeberry (Aronia arbutifolia) ○○	Serviceberry (Amelanchier canadensis) ○○
Spotted Geranium (Geranium maculatum) ●●	Wintersweet (Chimonanthus villosus) ○○	River Birch (Betula nigra) ○○
Butterfly Milkweed (Asclepias tuberosa) ○●	Beautyberry (Callicarpa americana) ○○	American Hornbeam (Carpinus caroliniana) ●
Gayfeather (Liatris spicata) ○○	Pursh (Rhus typhina) ○○	Fringetree (Chionanthus virginicus) ○○
Lady Fern (Athyrium filix-femina) ●	Cardinal Flower (Lobelia cardinalis) ●●	Shrub St. John's Wort (Hypericum prolificum) ○
Tussock Sedge (Carex stricta) ○○	Fringed loosestrife (Lysimachia ciliata) ●●	Flowering Dogwood (Cornus florida) ●
River Oats (Chasmodon latifolium) ○○	Cinnamon Fern (Onoclea cinnamomea) ○●	Black Gum (Nyssa sylvatica) ○○
White Turtlehead (Chelone glabra) ○●	Royal Fern (Osmunda regalis) ○●	Sisyrinchium (Sisyrinchium albidum) ○○
Blue Mist Flower (Eupatorium codestrum) ○●	Great Solomon's Seal (Polygonatum biflorum) ○○	Yaupon Holly (Ilex vomitoria) ○○
Joe Pye Weed (Eupatorium fistulosum) ○●	Tall Coneflower (Rudbeckia laciniata) ○	Virginia Sweetspire (Itea virginica) ○○
Joe Pye Weed (Eupatorium fistulosum) ○●	Tall Coneflower (Rudbeckia laciniata) ○	Daldorf (Tadonum distichum) ○○

Rain Garden Theater



Prepared For:



CampLongridge

Prepared By:

designforum

URBAN DESIGN | TRAIL PLANNING | LANDSCAPE ARCHITECTURE
www.designforuminc.com

Additional Perennials & Grasses Not Pictured
- Evergreen Wood Fern
- Marshmallow Hibiscus
- Blue Lobelia
- Sensitive Fern
- Switch Grass
- Little Bluestem
- Purpletop

Additional Shrubs Not Pictured
- Inkberry Holly
- Pink Indigo Bush
- Spicebush
- Waxmyrtle
- Swamp Azalea
- Elderberry

Additional Trees Not Pictured
- Hackberry
- Atlantic White Cedar
- May Hawthorn
- American Holly
- Sweetbay Magnolia
- Tulip Poplar